

MODEL NUMBER: PE-LRV110-DRR  
 DIMENSIONS ARE APPROXIMATE,  
 DO NOT SCALE DRAWING.

PERFORMANCE TABLE				
VACUUM	PER PUMP	DUPLEX TOTAL		
TORR	IN HG	LPS CFM	LPS	CFM
250	20	48	102	204
	FREE	16	34	68

EACH VACUUM PUMP REQUIRES 0.22 LPS ( 3.5 GPM)  
 OF SERVICE WATER WHEN RUNNING.

CONNECTIONS:

- A 1 1/2"NPT INLET FROM SYSTEM
- B 2"NPT EXHAUST TO ATM.
- C 1 1/2"NPT SEPARATOR DRAIN
- D 1 1/2"NPT MANUAL TANK DRAIN
- E 3/4"NPT COOLING WATER INLET

VOLTAGE TO BE 600 V/3PHASE/60HZ

VACUUM SETTINGS:  
 LEAD: ON @ 20" HG (250 TORR)  
 OFF @ 25" HG (125 TORR)  
 LAG: ON @ 18" HG (300 TORR)

ESTIMATED WEIGHT: 2,250 LBS  
 APPROXIMATE DIMENSIONS: 96" L X  
 48" W X 72" H

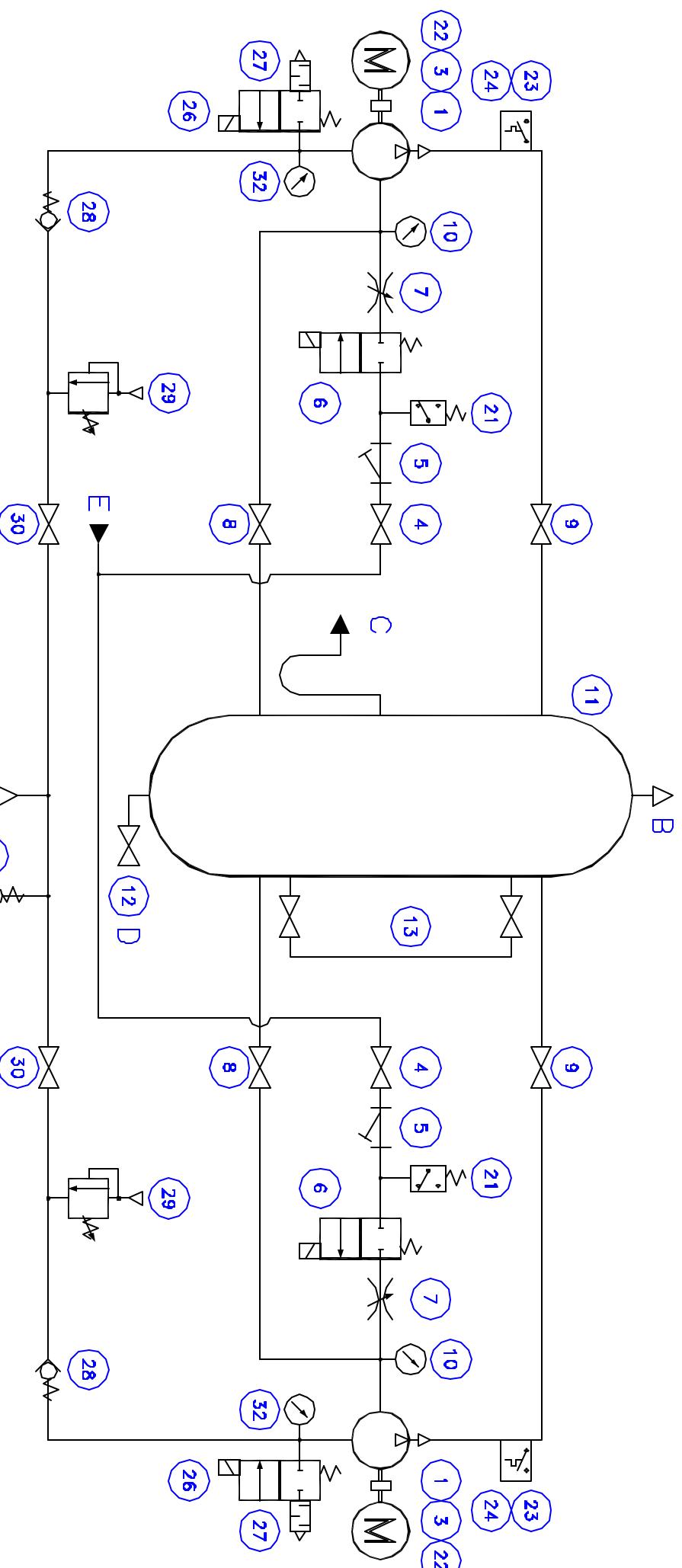
BACK FLOW PREVENTOR SUPPLIED BY  
 HOSPITAL

THIS IS A DUPLEX UNIT REQUIRING  
 POWER FROM TWO SEPARATE DISCONNECTS  
 IN THE MCC.

ON HIGH DEMAND, BOTH VACUUM PUMPS  
 WILL RUN AT THE SAME TIME.

**PEERLESS ENGINEERING SALES LTD.**  
 4015 EAST FIRST AVENUE, BURNABY  
 BRITISH COLUMBIA, CANADA, V5C 3W5

TYPE	MODEL NO.	FLUID	RESERVOIR
MEDICAL	PE-LRV110-DPR	VACUUM	250 L
SERIAL NO.	2896	FLOW	
		PRESSURE	
		HP/RPM	
		PHASE	



ITEM	DESCRIPTION	MANUFACTURER'S PART NUMBER	QTY
1*	VACUUM PUMP	SIH1 LPHB-45312 BN117010	2
3*	COUPLING	REXNORD OMEGA #E5	2
4*	BALL VALVE	VELAN 1/2"NPT S-C1113-SSGA	2
5*	Y STRAINER	SARCO 3/4" T CAST IRON	2
6*	SOLENOID VALVE	ASCO EF8210G 87 120/60 1/2"	2
7*	GLOBE VALVE	KITZ AK-200-LUM 1/2"	2
8*	BALL VALVE	VELAN 1"NPT S-C1113-SSGA	2
9*	BALL VALVE	VELAN 1 1/2"NPT S-C1113-SSGA	2
10*	COMPOUND GAUGE	LHA PGL-A-63-N-B-30-CS	2
11*	RECEIVER	PESL 60 GALLON (20"DIA X 48")	1
12*	DRAIN VALVE	DOMINION DBV31-H 1-1/2"	1
13*	SIGHT LEVEL GAUGE	PENBERTHY	1
21	WATER PRESSURE SWITCH	FURNAS 69WA4	2
22	ELECTRIC MOTOR 7.5 HP	BALDOR M37101-5 (575/3/60)	2
23	TEMPERATURE CONTROLLER	AQUASTAT L6006A1145	2
24	COPPER IMMERSION WELL	AQUASTAT 121371A	2
25	VACUUM SWITCH	PNEUMOTIVE S62580	2
26	SOLENOID VALVE	ASCO 8030C13 120/60 3/8"	2
27	FILTER MUFFLER	ALLED WJAN C38	2
28	CHECK VALVE	PESL 375-150	2
29	RELIEF VALVE	CDI VR75 3/4"	2
30	BALL VALVE	FAIRVIEW BV2103-K	2
31	SUCTION DISS	WESTERN M22 COMPLETE	2
32	VACUUM GAUGE	LHA PGL-A-63-N-B-30-VS	3
33	ELECTRICAL CONTROL	ECC	1

\* = EXISTING COMPONENTS

THIS DRAWING IS THE PROPERTY OF PEERLESS ENGINEERING SALES LTD., WHICH RESERVES THE RIGHTS OF COPYRIGHT. THE SAME MUST BE KEPT CONFIDENTIAL AND USED BY THE RECIPIENT ONLY FOR THE SPECIAL PURPOSE FOR WHICH IT IS SO ISSUED AND MUST, UPON REQUEST, BE RETURNED TO PEERLESS ENGINEERING SALES LTD.

REV	DATE	REVISION	DRN	APRD

**PEERLESS ENGINEERING SALES LTD.**  
 4015 EAST FIRST AVENUE, BURNABY  
 BRITISH COLUMBIA, CANADA, V5C 3W5

SCALE	NO SCALE	APPROVED	DRN BY	RJM
DATE			CHKD BY	

DUPLEX MEDICAL VACUUM UNIT

DWG. NO. 2896VS1